

# GOVERNMENT AFTER SHOCK

## A WORLD EVENT CO-DESIGN PROGRAM

YOUR INVITATION  
TO PARTICIPATE

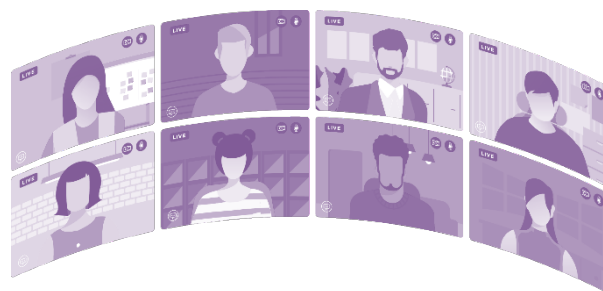
### Join a unique collaborative design initiative for a worldwide government event

The OECD Observatory for Public Sector Innovation (OPSI) team have in recent years convened a successful annual two-day conference each November.

In light of the current global health crisis, the group is planning to convert this gathering into a 'distributed' event – calling on the best of the tools and processes that utilise digital technology while also enabling a rich and fulfilling real-world experience for the audience.

**To leverage this unique opportunity, an experimental event model is being co-designed with a pop-up network of public-purpose professionals from around the world.**

With expressions of interest so far from more than 40 countries, the *Government After Shock* co-design program promises to bring a wide range of expertise and experience from across diverse cultures to create a responsive, highly-participatory event experience.



### New ways of convening, talking, learning

The innovative event format will combine the best of more **conventional, structured conferencing with leading-edge networked dialogue**. Participants in the co-design process will have the opportunity to model the **mindsets, skillsets and toolsets** needed to create this collective experience.

### New ways of thinking, working, collaborating

The co-design process has been designed to understand the interest, readiness & capability to **host linked local events**, as well as map the participation options and mutual expectations ahead of a formal launch mid-year. As a co-design participant, you will have the benefit of greater readiness and early opt-in through this "insider" program.

#### DESIGNING A TWO -DAY PROGRAM IN MULTIPLE MODES

**Part 1: Rethinking and rebuilding through innovation**, which will be open and informal, and focus on insights from the frontline.

**Part 2: Collaboration for systemic change beyond crisis**, which will bring together contributions from leaders around the world in more structured and connected forum.

A collaborative initiative of



# CO-DESIGNING A GLOBAL EVENT

## WHAT IT MEANS AND HOW IT WILL WORK

co  
designing  
collaborating  
convening

## Join us to shape the worldwide event format and logistics

We want to co-create an event program that produces an authentic local experience while enabling participants to be part of shaping a truly global dialogue and outcomes.

### What does co-design mean in this context?

This isn't a conventional public sector co-design program. It's about **co-designing a creative project**, so it will be different to co-designing public policy or stakeholder-led service design. It's also different because of some unique circumstances:

- It is a **first**: a large-scale co-design program being run to plan and convene a global government networked event.
- The co-design process will be **multi-modal**, using a mix of online and offline activities.
- The program will combine **live linked discussion** with **virtual collaboration** as we work together across multiple time-zones and cultures.
- The co-design is occurring in **varying levels of national lockdown** and against the backdrop of significant crisis activity across all sectors.
- The **scale of co-design participation is large**: there is currently interest from participants in more than 40 countries.
- It's an **accelerated process counting down to a mid-year launch** for the November 2020 event.

## What will the co-design program focus on?

### Event program

Framing the key themes and topics of interest that will be of most value locally and globally

### Event formats

Shaping the core elements into a shared event model that fits a range of local participation options including different scales, languages, cultures and time zones

### Event platforms

Testing and validating a set of tools that will support the hosting of the events, as well as the capture and curation of the discussions

At the July conclusion of the 3-part co-design phase, you will have created a level of readiness for **your country, organisation or city** to participate, as well as **shaped the global framework** for your peers in other jurisdictions.



# Your co-design program

GOVERNMENT  
AFTER SHOCK

We intend for this to be an **opportunity for collective creativity and impact**.

Your program will be run in **3 stages over approximately 12 weeks**. The co-design process will be conducted through a **series of collaborative activities** where draft concepts and formats will be curated for your deliberation and co-development to be integrated with the global planning. A **facilitated video linkup** will assemble groups at the end of each round to review, validate and prioritise your feedback. We will also actively seek participant input on value and relevance.

## STAGE 1: CONCEPT OVERVIEW

Co-framing participation options

## STAGE 2: SHAPING OPTIONS

Co-designing the event model

## STAGE 3: READINESS BLUEPRINT

Co-creating event resources

### CORE FOCUS & OUTCOMES

- Introducing the initiative; vision; draft scenarios & concepts
- Canvassing preliminary feedback on key building blocks & assumptions
- Assessing level of interest and mutual expectations

- Exploring participation options across a range of audience types
- Developing event design elements
- Confirming local capacity to host Gov After Shock events

- Developing and testing a suite of blueprint readiness kits for Gov After Shock participation
- Pre-launch mobilisation activities

### BRIEFING KITS

### STRUCTURED INPUT

to frame discussion

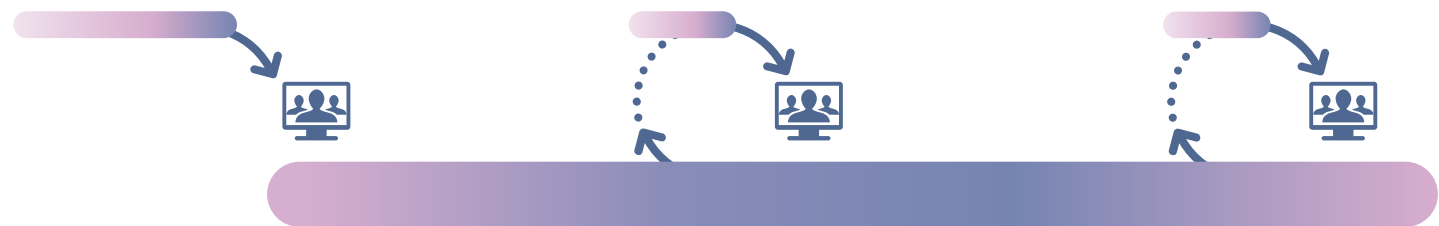
### VIDEO MEETINGS

to validate R&D and prioritise

### R&D by participants

supported by co-design leads

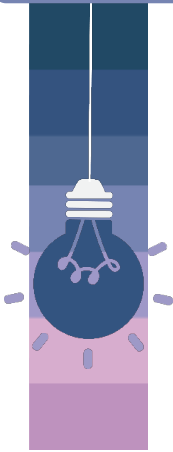
### UPDATES & reporting



# Join the 'pop-up collaboratory'

GOVERNMENT  
AFTER SHOCK

## Your participatory experience



The co-design program is for anyone interested in helping to shape a creative, participatory response to issues facing the post-crisis public realm, whether in their local area or at the macro level.

**We're looking for people who are open-minded and are energised by a 'license to experiment'.**

Your co-design experience will be fast-paced, fluid and responsive. You'll be interacting with public purpose peers in different locations, bringing a diverse range of experiences, disciplines and cultures.

We'll also be trialling tools and processes, some of which may be unfamiliar to you. Signing up to participate in the program tells us that you are willing to explore new ideas and learn new skills, as well as prepared to invest time and energy into collaborating on this shared initiative.

Your Cofluence co-design leads and the OPSI team will be actively involved and available to support you throughout the process.

## Starting your co-design process!



**Start your co-design process** by completing this online questionnaire:  
▶ <https://cof.lu/GovAS-codesign>

**NOTE:** *The kick-off questionnaire includes extra information to plan for your program.*



We will then email you the relevant **briefing information** and a link to a **calendar poll** so you can indicate your availability for the planned **video meetups**.

**NOTE:** *We will host video meetup multiple times to account for time zones.*

## About your Co-design Leads

The co-design program will be led and facilitated by **Allison Hornery** and **John Wells**, who have extensive experience working with public sphere organisations and initiatives through their work with Cofluence and X360, including a special emphasis on networked public purpose events and campaigns.



## Contact the team

**OPSI** Observatory of  
Public Sector Innovation

Email: [opsi@oecd.org](mailto:opsi@oecd.org)  
<https://oecd-opsi.org/government-after-shock/>

### Cofluence co-design leads

John Wells [john.wells@cofluence.co](mailto:john.wells@cofluence.co)  
Allison Hornery [allison.hornery@cofluence.co](mailto:allison.hornery@cofluence.co)